

Date: 2015-01-30

Technical Data Drywall access panel 1,3 for Climos F 200



Subject to change in the interest of technical progress.

Description:

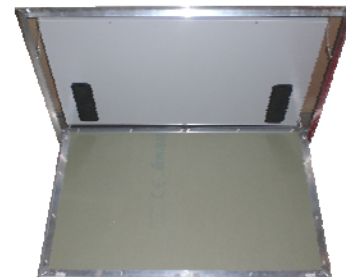
The drywall access panel is an inspection opening manufactured to dimension for the HRU CLIMOS F 200 to integrate into a drywall ceiling and serves as access for maintenance works of the ventilation unit assembled in the intermediate ceiling. The mounting frame consists of an aluminium angle profile around the edge with freely selectable attachment points. The opening that can be folded-out by 90° is fixed to the frame with 2 aluminium pivot bearings and with 3 latches (sprung latch) at the opposite side in the pivoting range. Due to safety reasons two arresting cables with spring hooks are mounted that must be unhinged when opening the panel completely. The access panel can be closed additionally with square box wenchers. The panelling of the folding opening consists of a gypsum plaster board of 12.5 mm. The angle profile of the frame is designed for the intake of ceiling panels of the same material thickness so that the inspection opening is on the same level and therefore optically appealing. The sealing tape around the edge of the front end of the panel serves as sound insulation additionally.

Views (with mounted HRU CLIMOS F 200):

Opened, secured with arresting cable



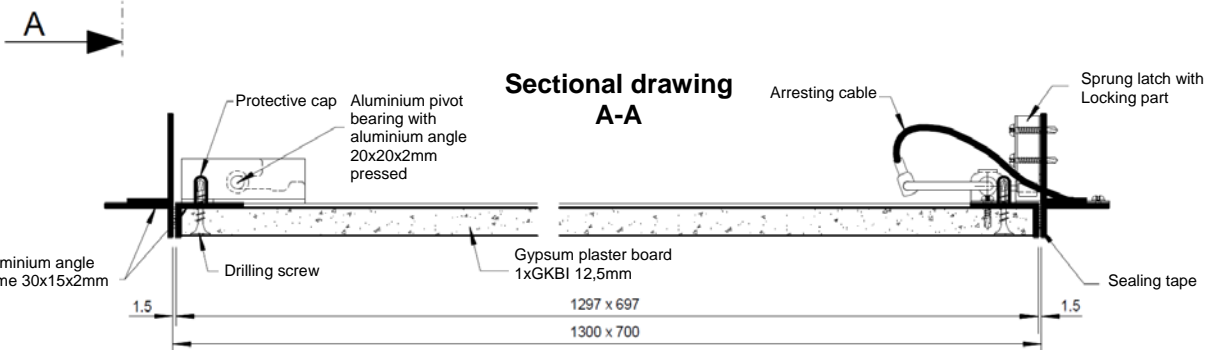
Opened, arresting cable unhinged



Dimensions:



Top view



Sectional drawing
A-A

Notes:

The drywall access panel must be assembled centrally below the ventilation device. The distance between the lower edge of the raw ceiling to the lower edge of the drywall access panel must be at least 270mm.

Weight: 7.5 kg